



Purpose DENSE-2 study:

Women with very dense breast tissue benefit from other ways of breast imaging. In this study, we will explore different ways. You have been invited for a contrast mammogram.

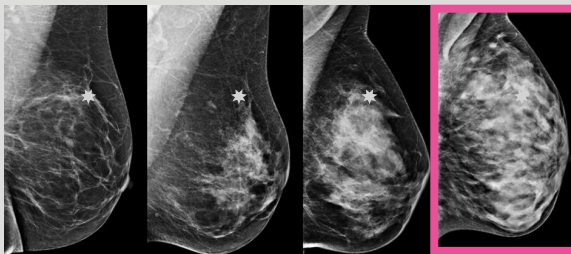
Why this invitation?

Your latest mammograms show that you have very dense breast tissue. This is important for two reasons:

1. Women with very dense breast tissue are more likely to develop breast cancer than those with less dense breast tissue,
2. Very dense breast tissue can hide breast cancer on a mammogram.

What is very dense breast tissue?

A breast consists of glands and fat. Women with very dense breast tissue have many glands in the breast and little fat. Glands appear white on a mammogram, just as breast cancer does. It is therefore difficult to actually see the breast cancer. The star in the four mammograms below shows this: in the rightmost mammogram, the star is harder to see.

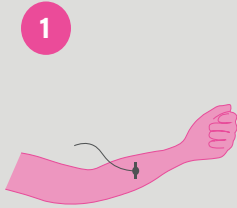


Less dense breast tissue

Very dense breast tissue

What is a contrast mammogram?

A contrast mammogram is made with the same device as a regular mammogram. The difference with a regular mammogram is that contrast medium is given beforehand via an IV in the arm. You need to wait a few minutes after receiving the contrast medium. A mammogram is then taken. See the pictures below.



You will receive contrast medium through an IV in your arm, after which you wait a few minutes.



A mammogram is taken in the same way as in the population screening.

What can you expect if you participate?

- 1 You will complete 2 questionnaires before the contrast mammogram.
- 2 You will undergo a contrast mammogram
- 3 You will complete 1 questionnaire after the contrast mammogram.

If you are participating in the DENSE-2 study, we will invite you for another contrast mammogram after about 2 years. This is only possible if you have participated in the population breast screening again and there is again no evidence of breast cancer.

Would you like to participate?

Would you please let us know whether or not you are interested in participating? This can be done via the website: www.dense-2.nl.