



Purpose DENSE-2 study:

Women with very dense breast tissue benefit from other ways of breast imaging. In this study, we will explore different ways. You have been invited for an MRI examination.

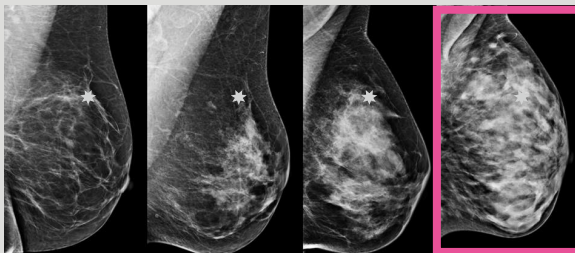
Why this invitation?

Your latest mammograms show that you have very dense breast tissue. This is important for two reasons:

1. Women with very dense breast tissue are more likely to develop breast cancer than those with less dense breast tissue,
2. Very dense breast tissue can hide breast cancer on a mammogram.

What is very dense breast tissue?

A breast consists of glands and fat. Women with very dense breast tissue have many glands in the breast and little fat. Glands appear white on a mammogram, just as breast cancer does. It is therefore difficult to actually see the breast cancer. The star in the four mammograms below shows this: in the rightmost mammogram, the star is harder to see.

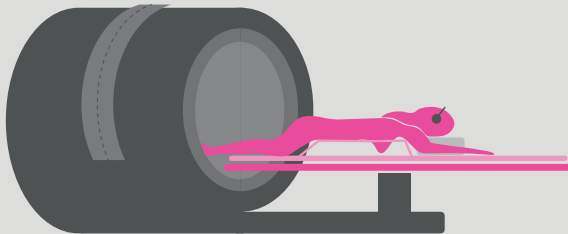


Less dense breast tissue

Very dense breast tissue

What is an MRI examination?

During the MRI examination, you lie on a bed in a kind of tube. The tube is illuminated and is open at the front and back (see below). During the MRI examination, you will be injected with a contrast medium. This is done through an IV into a blood vessel in your arm. You will lie in the MRI scanner for about 5 minutes.



The MRI device.

What can you expect if you participate?

- 1 You will complete 2 questionnaires before the MRI examination.
- 2 You will have an MRI examination.
- 3 You will complete 1 questionnaire after the MRI examination.

If you participate in the DENSE-2 study, we will invite you for another MRI examination after about 2 years. This is only possible if you have participated in the population breast screening again and there is again no evidence of breast cancer.

Would you like to participate?

Would you please let us know whether or not you are interested in participating? This can be done via the website: www.dense-2.nl.